



Medical Equipment

Acme Complete Medical Gas Delivery Systems

Medical Gas Equipment

Medical Cylinder Gas Equipment

Emergency Oxygen Inlet Boxes



For more information on Acme
Gas Medical Equipment scan
the QR Code above

Acme Complete Medical Gas Delivery Systems



Acme Cryogenics offers fully configured systems designed, installed and certified to meet today's medical gas requirements. Our experts will work with you to configure the best system to meet your needs.

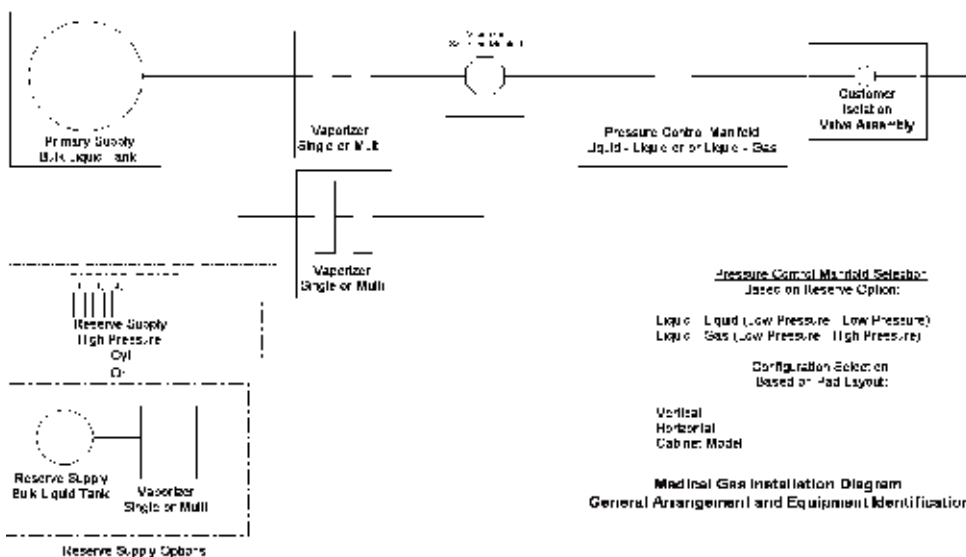
- Total Components Including Bulk Oxygen Supply, Back up and Delivery Equipment
- Designs for High Pressure, Liquid or Bulk Applications
- Certified Installation and Maintenance Services

Our equipment and systems are NFPA 99 2005 compliant.

Acme's certified medical gas technicians can install, repair And/or maintain your medical gas system to ensure it remains fully in compliance for years to come.

BULK MEDICAL GAS INSTALLATION DIAGRAM

(Shown with multiple reserve configuration options)



Acme Offers

We offer components and configurations for the following supply sources:

- High Pressure Cylinder Gas Delivery Systems for high pressure cylinder supply
- Liquid Cylinders (Dewar) Gas Delivery Systems for configurations using liquid cylinders as the primary and secondary supply with high pressure gas cylinders as the reserve supply.
- Bulk Liquid Tank Gas Delivery Systems for bulk liquid tanks with liquid or high pressure cylinder reserves.

Medical Source Equipment

ACME HOSPITAL CONTROL MANIFOLDS

Acme Hospital Pressure Control Manifolds are available for liquid x liquid or liquid x gas supply systems. They are available in one-half inch and one inch configurations.

Ordering Information

Description	Supply Configuration		Part Number
½"	Liquid x Liquid	Liquid	274-822616
½"	x Gas		274-818615
1"	Liquid x Liquid	Liquid	274-822042
1"	x Gas		274-822120



Acme's Hospital Pressure Control Manifolds are available in one half and one inch designs for liquid x liquid or liquid x gas medical gas supply.

HOSPITAL PRESSURE MANIFOLD IN CABINET

Acme Cryogenics' Hospital Pressure Control Manifolds are now available in a stainless steel cabinet. Your manifold is protected from accidental damage, weather, and other environmental dangers by the fully lockable, brushed stainless steel cabinet.

The cabinet is an option available when ordering.



Features

- Fully Lockable
- Weather resistant stainless steel
- Available with most 1" manifolds

Ordering Information

Description	Supply Configuration		Part Number
1"	Liquid x Liquid	Liquid	274-823268
1"	x Gas		274-823521

Medical Source Equipment

ACME MEDICAL RESERVE MANIFOLDS

Acme Medical Reserve Manifolds connect reserve cylinders to deliver product as needed. They are available with stands or brackets for floor or wall mounting. When teamed with the Acme SLIQ, it provides continuous product delivery, as automatic switchover from the primary to secondary supply is achieved when primary dewars drop to a preset level.

Features

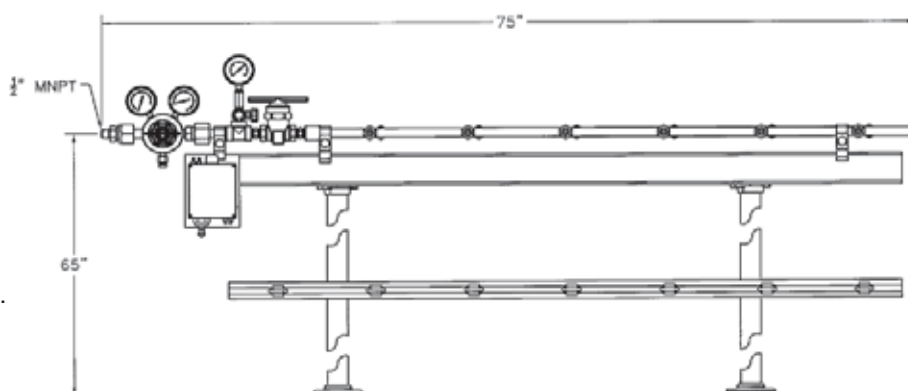
- Available in single or doubled sided configurations
- Designs to accommodate 3 to 24 cylinders
- Includes individual cylinder supports per NFPA99 2002



Ordering Information

Size	Part Number
12 Cylinder	272-822612
16 Cylinder	274-823170

Contact Acme for additional configuration options.



VAPORIZER SWITCHOVER MANIFOLD

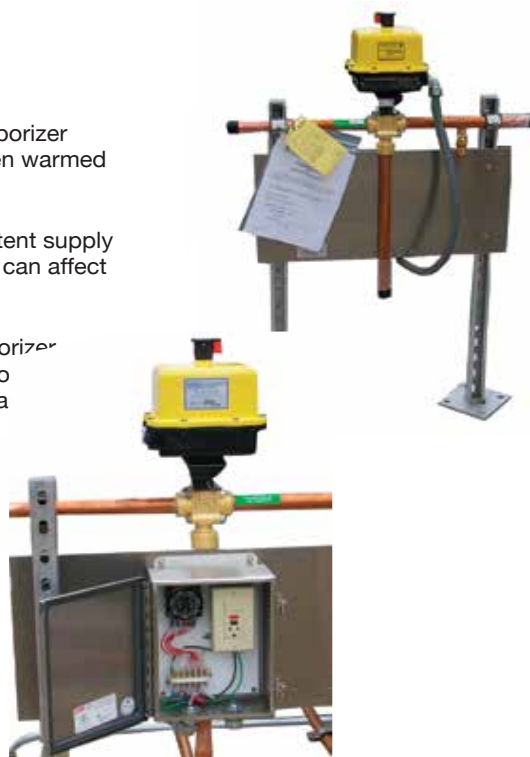
Acme's vaporizer switchover manifold provides automatic switching from vaporizer that has become inefficient (due to frost build-up) to a vaporizer that has been warmed by ambient air and is ready for peak performance.

Because health care installations are required to maintain a constant, consistent supply of product, vaporizer switchover manifolds can eliminate frosting issues that can affect performance and possibly limit service.

Automatic switchover vaporizer manifolds can be set to take the current vaporizer off-line and bring another one on-line at pre-determined intervals, allowing both units to work at optimum levels. Because the change between vaporizers is a switchover requires minimal user involvement.

Ordering Information

Size	Part Number
1"	271-821731
1½"	271-821732



Medical Source Equipment

LOCAL SIGNAL PANELS

Acme also offers Local Signal Panels for use with your medical bulk oxygen supply system. 24 and 120 volt models are available to meet your system requirements. Models are available for use with liquid x liquid or liquid x gas supply configurations.

Ordering Information

Voltage	Description	Part Number
120	Liquid x Liquid	284-010704-1
120	Liquid x Gas	284-010704-2
24	Liquid x Liquid	284-060504-1
24	Liquid x Gas	284-060504-2



To ensure compliance with current NFPA requirements, Acme's Local Signal Panels provide a visual indication of an alarm condition.



Local Signal Panel Stand

The Local Signal Panel Stand is an optional accessory available with the Local Signal Panel. The 6ft tall, aluminum stand can be attached to the floor using four bolts. For pre-drilled holes align with the screw-holes on the Local Signal Panel, allowing easy set up.

Ask about this stand when ordering.

Ordering Information

Part Number
279-823295

Medical Source Equipment

ACME FIXED END ASSEMBLIES

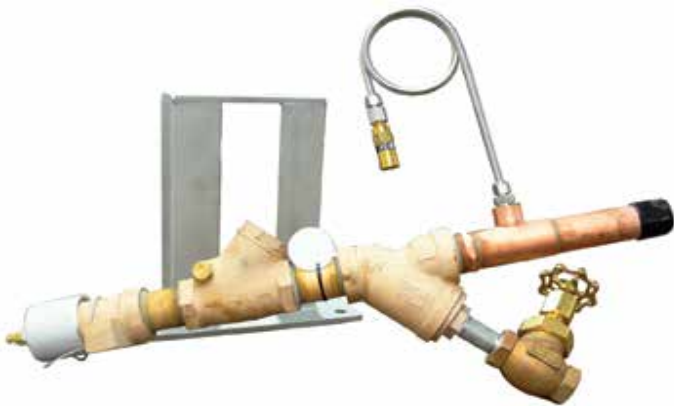
Specifications

Pressure Rating0-350 PSIG

Connections
Inlet 1 1/2" CGA
Outlet 1 1/2" Type K Copper Tube

Materials of Construction
Assembly Brass/Bronze/Copper
Strainer..... Brass/Bronze/Copper
Check Valve Brass/Bronze/Copper
Safety Relief Valve Brass/Bronze/Copper
Stand Stainless Steel

Dimensions 14 1/8" to Center Line



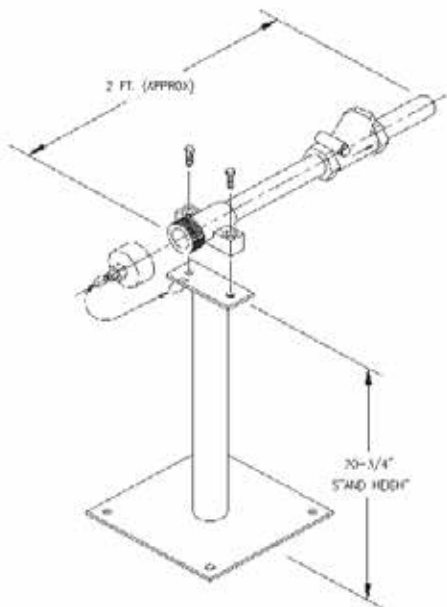
Fixed end assemblies are used for liquid filling from tanks and trailers.

Ordering Information

(strainer, check valve, stand and safety relief valve, pictured above)

Gas Service	Part Number
Argon	281-LX2509
Oxygen	281-LX2510
Nitrogen	281-LX2511

Stands	
Description	Part Number
30" Customer Stations	275-701229B
36" Customer Stations	275-817642H
Stand, Fill Connection	289-LX-1150



Fixed End and Check Valve Assembly

Ordering Information

Gas Service	Part Number	With or Without Stand
Oxygen	274-415467	without stand
Nitrogen	274-415468	without stand
Argon	274-415469	without stand
Oxygen	274-415450	with stand
Nitrogen	274-415452	with stand
Argon	274-415451	with stand

Medical Source Equipment

ACME BULK INSTALLATION KITS

Acme Bulk Installation Kits contain pre-assembled collection of key components required in a give bulk installation. They are available for a variety of installation types and configurations. A typical kit provides 95% of all components required for a given installation.

By offering these components together, rather than separately, customers' engineering, purchasing and service staff will save time and money. The package option allows for ease of ordering, eliminates time spent researching specifications, and allows for standardization of components across multiple applications, making upgrades, maintenance and repairs faster and more cost-effective.

Features

- All materials are Oxygen compatible
- All parts are cleaned to Acme's Validated Oxygen Cleaning Specification (QA-114 & QA 115)
- Parts and equipment are engineered and selected to meet customer requirements
- Parts and equipment meet or exceed NFPA and JACHO requirements for compliant medical systems (where applicable)



Typical Kit Components

- 1" pre-insulated pipe, 10' long
- 1" pre-insulated 90° elbow
- 1" pre-insulated tee
- 1" pre-insulated field joint kit
- 30" pipe support
- End cap - aluminum
- Pipe clamps, 3" for insulated pipe
- Pipe clamp 1 1/8" O.D.
- Pipe clamp 1 5/8" O.D.
- Bolt anchor, 1/2" x 3' LG
- 1" copper tee
- 1" copper elbow, long radius
- 1" copper coupling
- 1" copper tubing
- 1 1/2" copper tee
- 1 1/2" copper elbow, long radius
- 1 1/2" copper coupling
- 1 1/2" copper tubing
- Flange spool kit, 1" male
- Courtesy/purge valve assembly

Ordering Information

Description

Part Number

Liquid x Gas Kit 1"
for 1,500 Gallon or
Smaller

KIT-ACME-MED-LG

Liquid x Liquid Kit
1" for 1,500 Gallon
or Smaller

KIT-ACME-MED-1

Designs are available for large vessel and multiple vessel installations. Kits can also be customized to meet special application requirements. Contact Acme for more information.

Medical Cylinder Gas Equipment

ACME MODEL SLIQ MEDICAL GAS LIQUID CYLINDER MANIFOLD

The Acme Model SLIQ provides continuous gas delivery from two banks of cryogenics liquid gas cylinders without interruption.



Specifications

Flow Capacity		
One Cylinder	0-325 SCFH	
Two Cylinders	0-400 SCFH	
Three Cylinders	0-600 SCFH	
Maximum Inlet Pressure		350 PSIG
Maximum Outlet Pressure		100 PSIG
Materials of Construction		
Components	Brass, Stainless Steel	
Housing	Fiberglass	
Connections		
Inlet	¼" MNPT	
Outlet.....	½" MNPT	
Dimensions		12" W x 14"H x 6"D
Power Supply		110 VAC
Transfer Hoses		6ft length with reverse flow check valve, ¼" MNPT connection included

Features

Automatic Changeover

When one bank of cylinders is depleted, the manifold automatically switches to the second bank. Green or red signal lights indicate when the manifold is drawing from the primary or reserve side, respectively. After the depleted cylinders are replaced, a selector valve at the bottom of the manifold is reset in accordance with operating instructions.

Gas Saver Feature

As integral "Gas Saver" circuit is the SLIQ manifold prevents the accumulated gas pressure in the reserve liquid cylinder from being discharged to the atmosphere and wasted. During shutdown periods both banks will be vented to the atmosphere. Adequate ventilation must be provided to remove or disperse these gas discharges safely.

Supply and Delivery Pressure Ranges

Users must be sure to utilize the correct cylinder and pressure necessary for their applications. SLIQ manifolds will not operate properly unless the correct liquid is used.

Ordering Information

See next page for ordering specifications and NFPA requirements.

Optional Equipment

- Acme Model S300 Remote Alarm Box
- Floor Stand with Base

Medical Cylinder Gas Equipment

ACME COMPLETE SUPPLY SYSTEMS FOR LIQUID CYLINDER INSTALLATIONS IN MEDICAL GAS APPLICATIONS

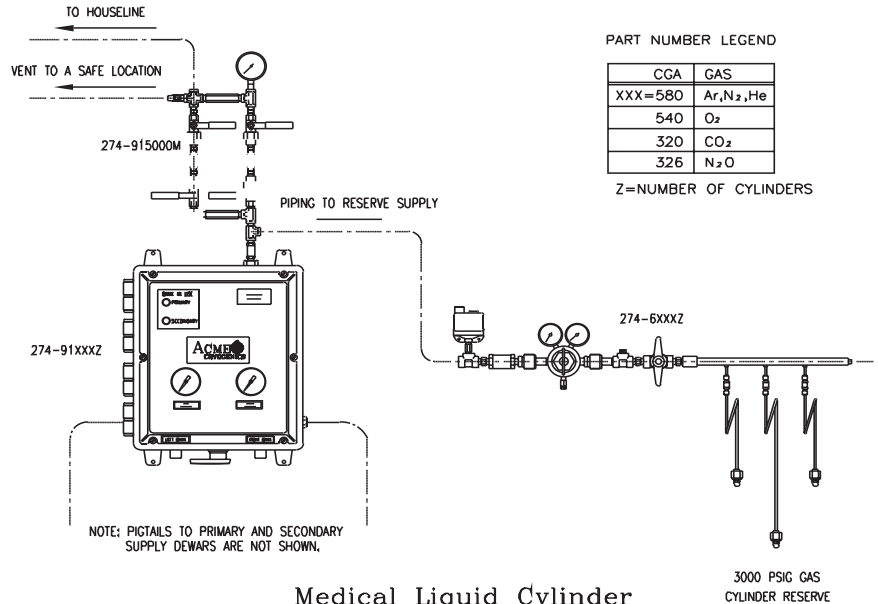
Complete System Components

A complete system for this application consists of one each of the following components.

Please refer to NFPA 99, 2002 edition, 5.1.3.4.10 (a) and (b) to determine the number of cylinders and cylinder reserves you require.

(1) High Pressure Cylinder Reserve with Auto Switchover (0-3000 PSIG)

# of Cylinders	Part Number*
3	274-6540ZM
5	274-6540ZM
7	274-6540ZM
9	274-6540ZM



Medical Liquid Cylinder Supply System With High Pressure Cylinder Reserve
NFPA99 5.1.3.4.10

(1) Dual Houseline Regulator Tree

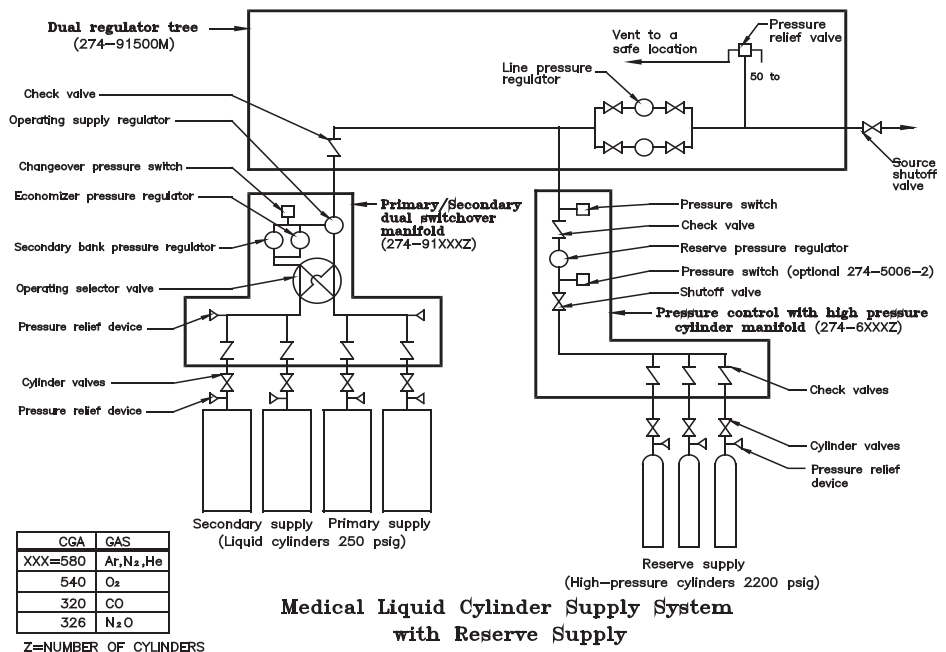
Gas Service	Part Number
All Medical	274-91500M

The SLIQ is the central control of an Acme liquid cylinder supply system. It provides automatic switchover from the primary supply to the secondary when gas in the primary dewars drops to a preset level.

SLIQ Liquid Cylinder Manifold

Number of Cylinders (primary x secondary)	Part Number
2 (1x1)	274-91XXX2M
3 (1x2)	274-91XXX3M
4 (2x2)	274-91XXX4M
5 (2X3)	274-91XXX5M
6 (3x3)	274-91XXX6M

*When configuring part numbers, replace XXX with appropriate CGA number.



Medical Liquid Cylinder Supply System with Reserve Supply
NFPA99 5.1.3.4.10

Medical Cylinder Gas Equipment

ACME HIGH PRESSURE GAS SYSTEMS WITHOUT RESERVE

High pressure cylinders should be used in facilities that have low or intermittent requirements for medical gas. These systems are not affected by the warming of liquid cylinder and therefore do not require economizer circuits and liquid cylinder maintenance.

The system shown is comprised of a 3, 5, 7 or 9 cylinder manifold on each side of the control section which automatically switches from the primary supply to the secondary supply when the pressure in the primary cylinders drops below a preset pressure.

A pressure switch is provided to send a signal to an alarm panel that indicates when the reserve cylinder bank is in use. Both cylinder banks feed the house line through a dual regulator manifold as described in the liquid cylinder system.

Specifications

Flow Capacity 0-4,000 SCFH

Inlet Pressure 0-3,000 PSIG

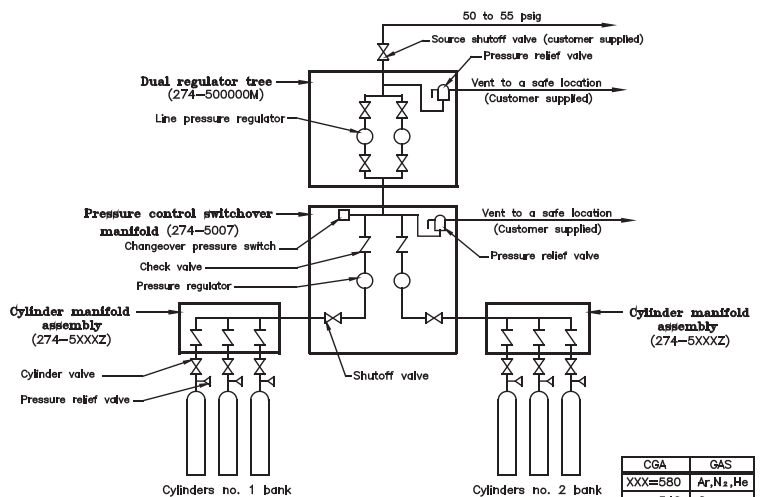
Outlet Pressure 0-55 PSIG

Connections

Inlet..... CGA

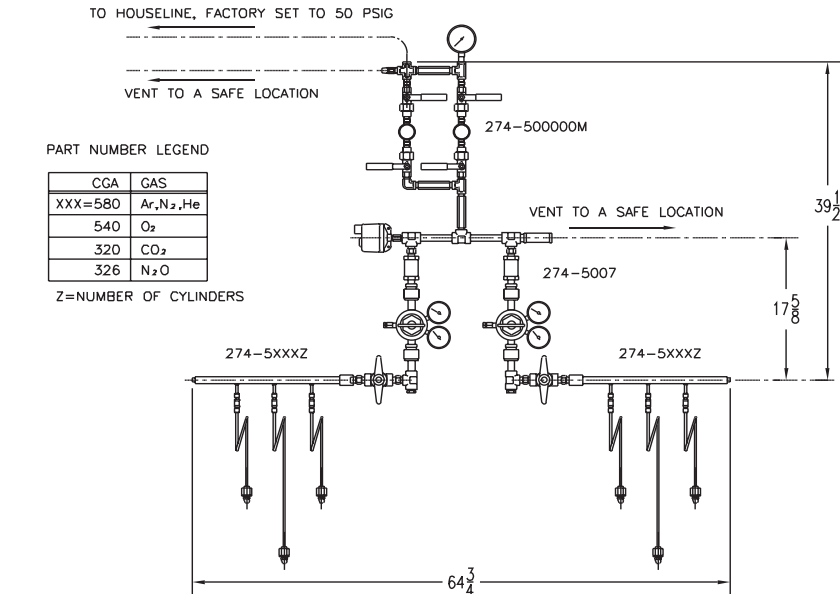
Outlet 1/4" FNPT

Material of Construction Brass



Medical Gas Cylinder Supply System Without Reserve Supply

NFPA99 5.1.3.4.9



Medical Gas Cylinder Supply System Without Reserve Supply
NFPA 5.1.3.4.9

Ordering Information, Required Components

Item	Part Number
(1) Dual Houeline Regulator Tree (all gases)	274-50000M
(1) Pressure Control/Switchover Manifold (all gases)	274-5007
(2) Primary and Secondary Cylinder Header	274-5XXXZ*
*XXX = CGA Number Oxygen: 540 Nitrogen, Argon, Helium: 580 Carbon Dioxide: 320 Nitrous Oxide: 326	
*Z = Number of cylinders per header (3, 5, 7, 9) Typically, primary and secondary headers have the same number of headers.	

Ordering Example

Primary and Secondary Cylinder Header
27455807 = 7-Cylinder Header for Inert Service

Medical Cylinder Gas Equipment

D/E Cylinder Medical Charging Manifolds



Acme Cylinder Charging Manifolds are designed to provide simple economical filling of up to 60 cylinders at one time. The vacuum and vent controls are located directly on the manifold, eliminating the need for a separate panel. The manifold is provided with a threaded end for future expansion.

Features

- ♦ Master shutoff valves and check valves to control vacuum and vent
- ♦ 8 ½" 4,000 PSI master gauge for precision control
- ♦ Carbon Steel painted floor mounting stands
- ♦ Pigtails and/or cylinder brackets available separately

Options

Wall Mounted Cylinder Manifolds for Medical "D" and "E"

Acme also offers wall mounted and portable cylinder gas charging models for medical gas service.

Medical Cylinder Gas Equipment

HP Cylinder Charging Manifolds



Acme Cylinder Charging Manifolds are designed to provide simple, economical filling of 24 or 48 cylinders. The vacuum and vent controls are located directly on the manifold, eliminating the need for a separate panel. The manifold is provided with a threaded end for future expansion.

Specifications

Inlet Pressure0-3,000 PSIG
Outlet Pressure0-3,000 PSIG
Materials of ConstructionRed Brass
ConnectionsCGA (see ordering information)
Number of Cylinders24 (standard)

System Layout

- A minimum of two separate parallel manifolds should be provided to permit switching to occur without shutting down the pump when a manifold of cylinders is filled.
- Minimum spacing between adjacent manifolds should be 6 feet (8 feet preferred).

Features

- Master shutoff valves and check valves to control vacuum and vent
- 8 1/2" 4,000 PSI master gauge for precision control
- Carbon steel painted floor mounting stands
- Pigtails and/or cylinder brackets available separately (see Accessories section)

Ordering Information: Manifolds

<u>Gas Service</u>	<u>CGA</u> <u>(Header Valves)</u>	<u>Description</u>	<u>Part Number</u>
Oxygen	540	Vacuum and Vent Control, Pressure Gauge	274-1003
Argon, Helium and Nitrogen	580	Vacuum and Vent Control, Pressure Gauge	274-1802
Hydrogen and Carbon Monoxide	350	Vacuum and Vent Control, Pressure Gauge	274-2601
Hydrogen and Carbon Monoxide	350	Welded Stainless Steel Manifold with Brass Valves, Vacuum and Vent Control, 24 Valve Extension Only	274-SK8907C

Medical Cylinder Gas Equipment

HP Cylinder Charging Manifolds

Ordering Information: Extensions

<u>Gas Service</u>	<u>CGA</u> <u>(Header Valves)</u>	<u>Description</u>	<u>Part Number</u>
Oxygen	540	Extension Only	274-1004
Argon, Helium and Nitrogen	580	Extension Only	274-1803
Hydrogen and Carbon Monoxide	350	Extension Only	274-2602
Hydrogen and Carbon Monoxide	350	Welded Stainless Steel Manifold with Brass Valves, 24 Valve Extension Only	274-SK8908C



Emergency Oxygen Inlet Boxes

ACME EMERGENCY OXYGEN INLET BOXES

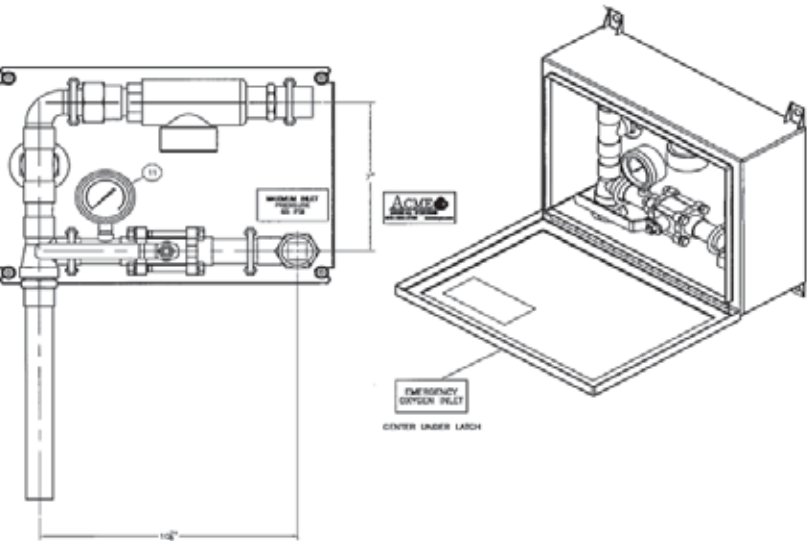
The Acme Emergency Oxygen Inlet Box is used with bulk outdoor installations to connect a temporary, auxiliary source of supply in the event of an emergency or maintenance situation.

It features a 1" safety relief valve to ensure adequate pipeline protection. It also offers a flexible universal outlet configuration, which allows for reduced installation time.

The inlet is housed in a weather tight surface mount enclosure box which can accommodate a padlock to allow entry only by authorized personnel.

Specifications

Inlet Pressure.....	75 psi
Materials of Construction	
Enclosure.....	NEM4
Valve Body.....	Bronze
Piping Copper	
Connections	1" FNPT
Dimensions	16" w x 12"h x 6"d



Features

- Inlet 1" FNPT connection for high flow
- Lockable weather resistant (NEMA 4) enclosure for exterior mounting
- Gauge for display of supply pressure
- Integrated 1", 75 psi ASME safety relief valve
- NFPA 99C Compliant
- Available surface or flush mount
- UL Listed Enclosure
- Cleaned, capped and certified for Oxygen USP Service
- Check valves with tube ends available

Ordering Information

Description	Part Number
Inlet Box, Surface Mount	400-823001
Inlet Box, Flush Mount	400-823098

Required Parts for Complete Installation

1" check valve with factory brazed copper extensions, oxygen cleaned	400-823187
1 ½" check valve with factory brazed copper extensions, oxygen cleaned	400-823188
2" check valve with factory brazed copper extensions, oxygen cleaned	400-823189
1" replacement relief valve, 75 psi, ASME relief valve	279-823139

Emergency Oxygen Inlet Boxes

CHECK VALVES WITH BRAZED COPPER EXTENSIONS



Acme offers check valves with brazed copper extensions for use in a built system installation. Because the valves come factory-ready complete with 12 inch brazed copper extensions, they can significantly reduce installation time by eliminating the need for field assembly.



Features

- Conbraco High Flow Straight-through Design Check Valve
- 12" Factory Brazed Copper Extensions
- Cleaned, Capped and Certified for Oxygen USP Service
- Individually Bagged
- Spring Fully Shielded from Flow
- Available in 1", 1 ½" and 2" sizes

Ordering Information

Size	Part Number
1"	400-823187
1½"	400-823188
2"	400-823189



800.422.2790

support@opwces.com